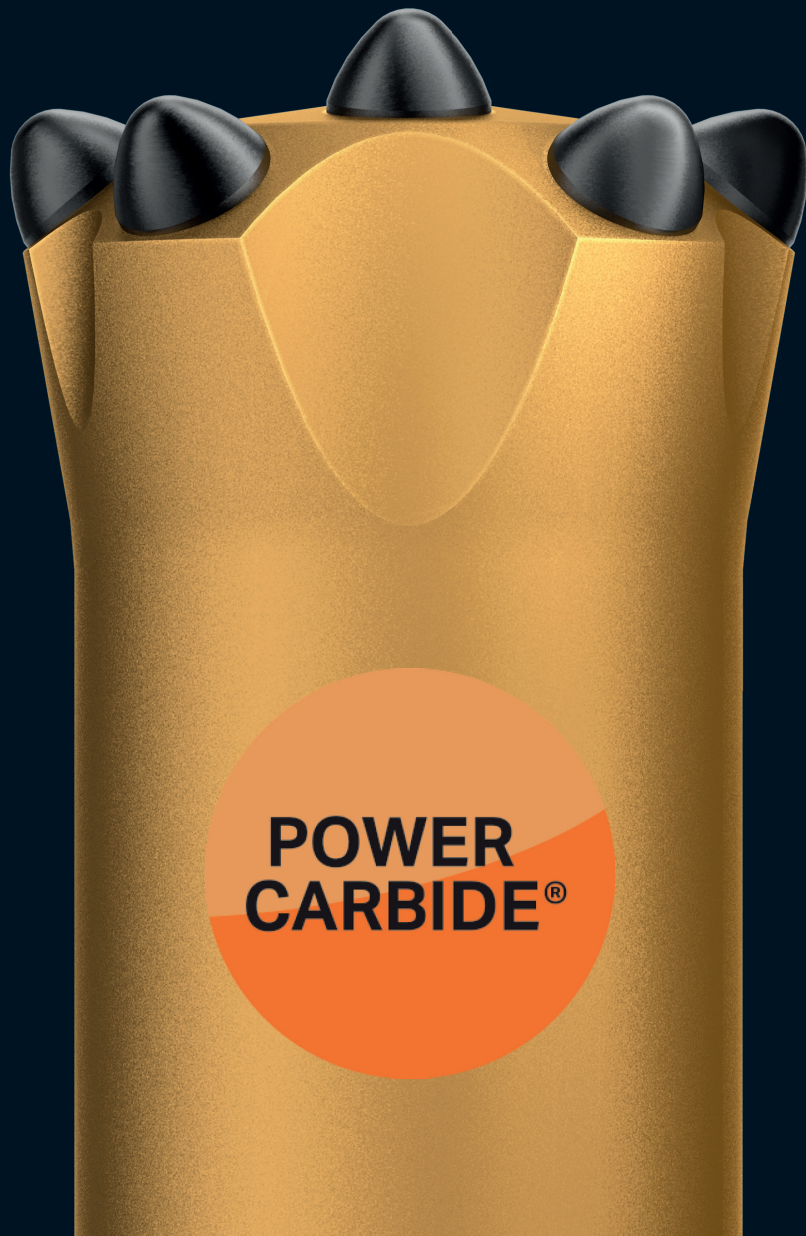




TOP HAMMER TAPERED BITS MORE POWER. LESS WASTE



BOOSTED FOR A BETTER TOMORROW

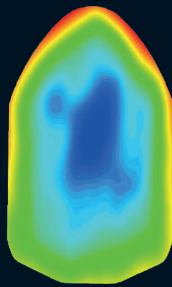
The upgraded Top Hammer Tapered Bits comes with dual value as we are adding our tough and resilient PowerCarbide® grades, and at the same time using at least 60% recycled carbide. They also feature an improved steel grade and perfect bit-rod connection. A great choice for sustainable operations, without having to lower your expectations on high quality and performance.

POWERCARBIDE®

PowerCarbide® is the gathering of our most powerful carbide grades, representing the very best materials technology we have to offer. The innovative PowerCarbide® grades enable the buttons to retain their shape as long as possible. This ensures longer grinding intervals, fewer bit changes, reduction of early breakages and improved safety.

XT49 GRADE

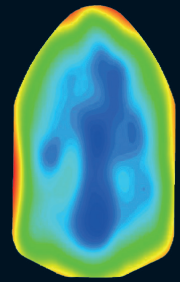
Our XT49 grade - where XT stands for extra tough - feature high wear resistance and optimized toughness. In testing, they have proven to be 1,5 times more effective than other products on the market.*



Our manufacturing process enables the reduction of early button failures - leading to a grade much more resilient to breakages, while enabling more protrusion and a sharper geometry.

SH70 GRADE

Our SH70 grade - where SH stands for self hardening - feature homogeneous properties throughout the material. It has the ability to become both more wear resistant and tougher as drilling progresses.



The hardness of the insert surface continuously increases during drilling, which means that the hard top never wears off. The self-hardening effect is greatest in hard and competent ground.

RECYCLED CARBIDE

Few dispute the fact that we need to change the way we operate to further reduce our impact on the planet. Our Rock Tools Recycling Program, and the use of recycled carbide, is one important action of making sure that raw materials are used in an efficient and sustainable way, and that our products are recycled when they reach end-of-life.

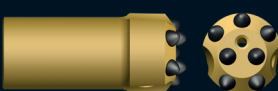

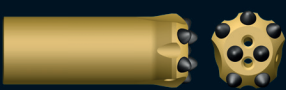
The upgraded Top Hammer Tapered Bits include at least 60% recycled carbide. The recycled material has the same strong and resilient properties as virgin, while requiring 70% less energy in production and emitting 64% less CO₂.



TAPERED BITS ASSORTMENT

FOR PEAK PRODUCTIVITY IN HANDHELD AND SMALL HOLE DRILLING

Sandvik is your dedicated partner in small hole drilling, and our full assortment of premium tapered bits cover your every need.

Button bit	FLUSHING HOLE, MM		BUTTONS, MM		TAPER	DIAMETER, D		PART NUMBER
	Front No Size	Gauge No Size	Front No Size	Gauge No Size		mm	in	
	1x5	1x5	1x7	4x7	12°	28	1 1/8"	5795-6428-B49
	1x5	1x5	1x7	4x7	12°	28	1 1/8"	5795-6428-B70
	2x4	1x5	2x7	4x7	12°	30	1 3/16"	5795-6530-B70
	2x4	1x4	2x7	5x7	12°	32	1 1/4"	7795-5232-B49
	2x5	1x5	2x7	5x9	12°	38	1 1/2"	7795-5238-B49
	1x4	1x6	2x7	5x7	12°	33	1 9/64"	7770-4433-B49
	1x4	1x6	2x7	5x7	12°	33	1 9/64"	5770-4433-B70
	2x4	1x4	2x7	6x8	12°	35	1 3/8"	7770-5435-B49
	2x4	1x4	2x7	6x8	12°	35	1 3/8"	5770-5435-B70
	2x4,5	-	2x7	6x7	12°	33	1 9/64"	5770-5433A-B49
	2x4,5	2x5	2x7	6x7	12°	33	1 9/64"	5770-5433C-B49
	1x5	1x5	2x7	5x7	11°	36	1 7/16"	7776-4432-B49
	1x5	1x5	2x7	5x8	11°	35	1 3/8"	7776-4435-B49
	1x5	1x5	2x7	5x8	11°	36	1 7/16"	7776-4436-B49
					11°	36	1 7/16"	7776-4436-B70
	1x6	1x6	2x7	5x8	11°	38	1 1/2"	7776-4438-B49
					11°	38	1 1/2"	7776-4438-B70
	1x6	1x6	2x8	5x9	11°	40	1 37/64"	7776-4440-B49
	1x4	1x4	2x7	4x8	11°	34	1 11/32"	7776-6434-B49
	1x4	2x5,5	2x7	5x7	7°	30	1 3/16"	7788-5230M-B49
	2x5	1x5	2x7	5x7	7°	32	1 1/4"	7788-5232-B49
	2x4	1x4	2x7	5x7	7°	33	1 9/64"	7788-5233-B49
	2x4	1x4	2x7	5x8	7°	35	1 3/8"	7788-5235-B49
	2x4	1x4	2x7	5x8	7°	38	1 1/2"	7788-5238-B49
	2x5	1x5	2x8	5x9	7°	40	1 37/64"	7788-5240-B49

*Test results and calculations are to be considered as results reached under certain and controlled conditions. These test results and calculations should not be treated as specifications and Sandvik does not guarantee, warrant or represent the outcome of test results or calculations in any or all circumstances.

